



BAV Blätter

Nr. 1

Programm für Einsteiger

In diesen BAV Blättern sind Umgebungskarten für elf Veränderliche Sterne unterschiedlicher Sterntypen enthalten. Alle Sterne sind für Einsteiger gut geeignet, um erste Erfahrungen mit der Veränderlichenbeobachtung zu sammeln. Es wurde darauf geachtet, dass auch mit kleinen Instrumenten beobachtet werden kann.

Im Einzelnen handelt es sich um folgende Sterne:

Bedeckungsveränderliche	Al	Dra	SW	Lac	CD	Tau	Z	Vul
RR-Lyrae-Sterne	RR	Lyr						
Mirasterne	R	And	R	Cyg	R	Leo	R	Ser
Halbregelmäßige	AF	Cyg	R	Sct				

Die für die Beobachtung wichtigen Daten zu den einzelnen Veränderlichen stehen in der Kopfleiste der abgebildeten Umgebungskarten.

Ausführliche Informationen zu allen BAV-Beobachtungsprogrammen sind im Heft 1 des aktuellen BAV Circulars zusammengestellt. Das gedruckte BAV Circular kann schriftlich bei der BAV bestellt werden, oder auf der Webseite der BAV gelesen und heruntergeladen werden.

2. Auflage, Dezember 2009

Bundesdeutsche Arbeitsgemeinschaft für Veränderliche Sterne e.V. (BAV)

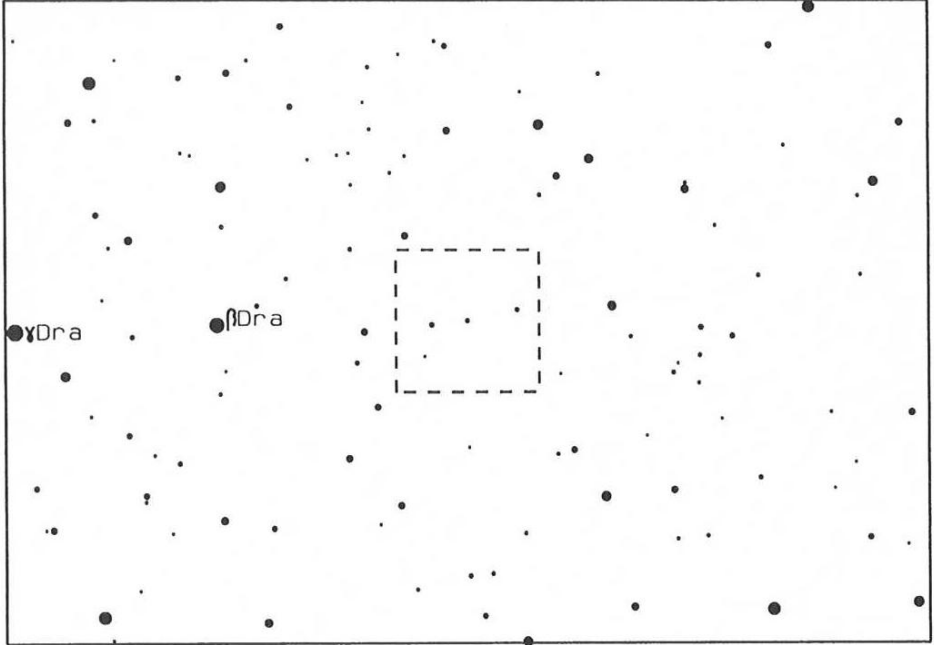
16 55 8 52 46 32 (1950.0)
16 56 18 52 41 54 (2000.0)

AI Dra

Max: 7.05 MinI: 8.09 MinII: 7.16 Typ: EA/SD
D = 4.4h d = 0 h Phase: Per.: 1.198814d

19° x 13°

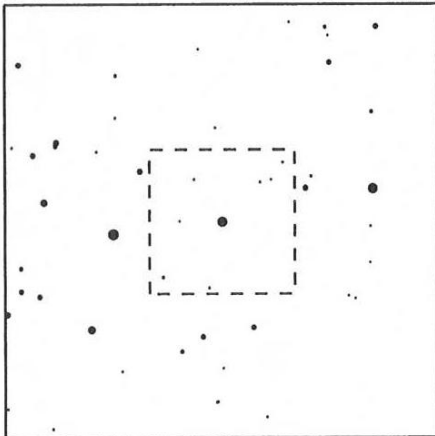
m ≤ 7.9



3° x 3°

PPM

m ≤ 11.30

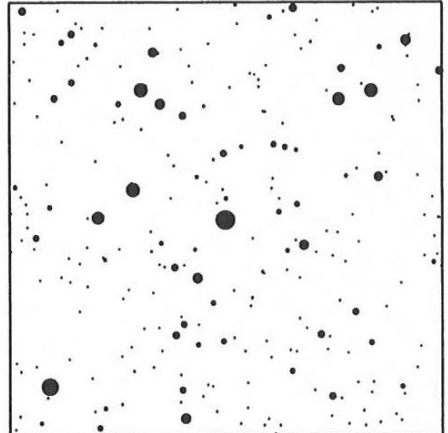


Copyright 2002 F. Agerer (BAV)

60' x 60'

GSC

m ≤ 14.79



Karte Version 3.03

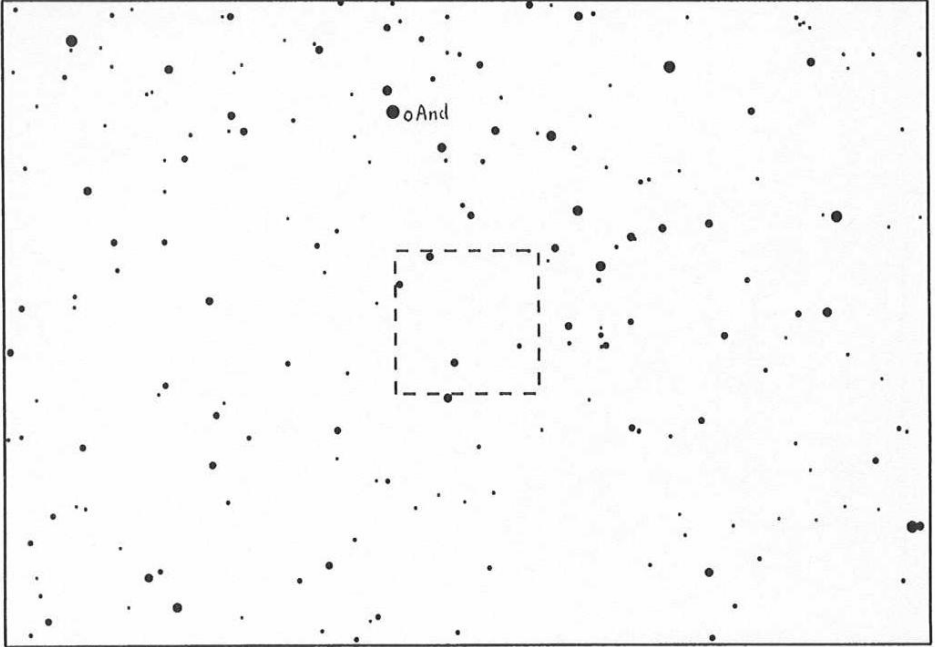
22 51 22 37 40 19 (1950.0)
22 53 41 37 56 18 (2000.0)

SW Lac

Max: 8.54 MinI: 9.36 MinII: 9.34 Typ: EW/KW
D = h d = h Phase: Per.: 0.320720d

19°x13°

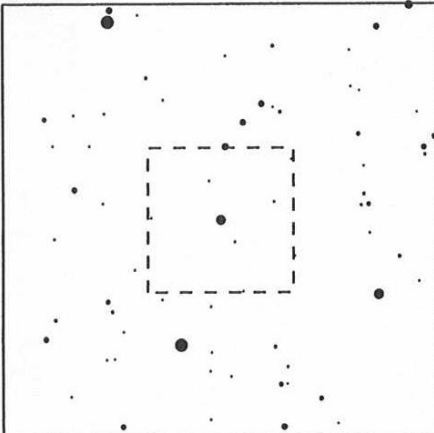
m <= 7.9



3°x3°

PPM

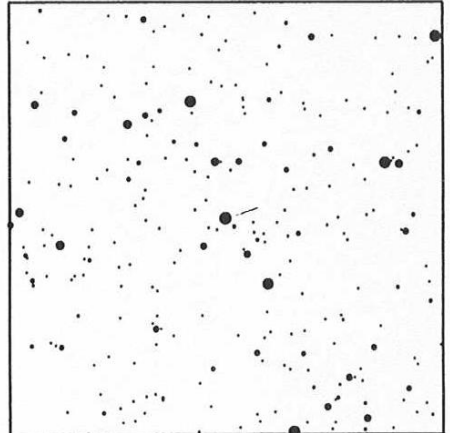
m <= 11.30



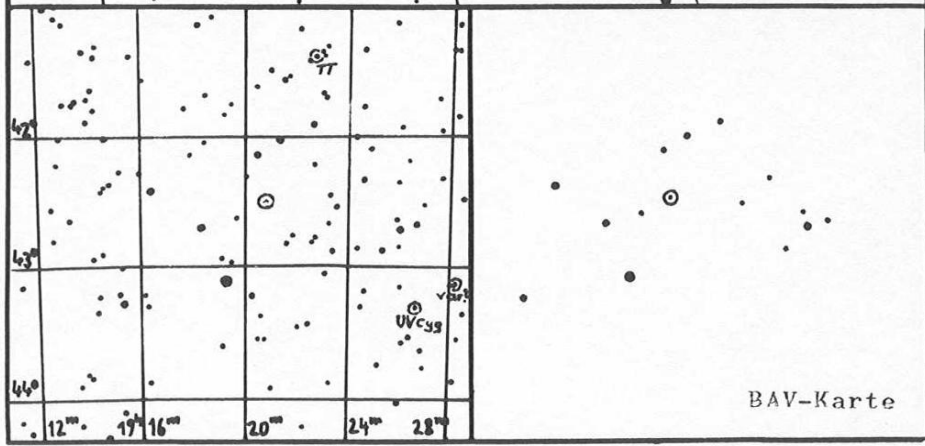
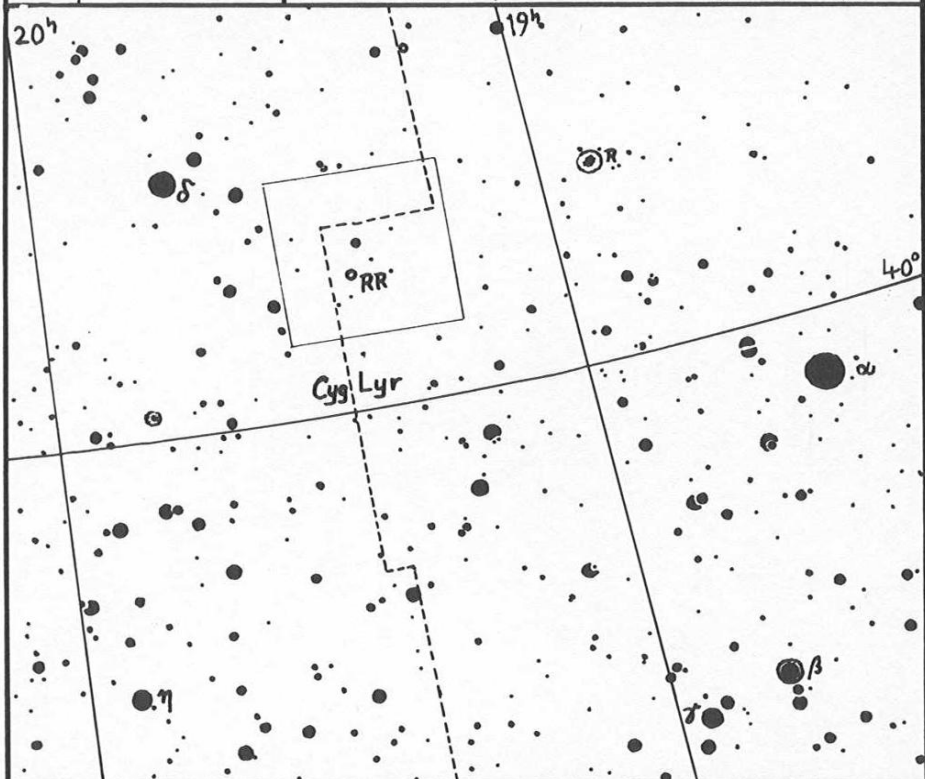
60'x60'

GSC

m <= 13.52



	Ort 1950	α $19^h 23^m 52^s$	RR Lyr
		δ $+42^\circ 41,3$	
	$(M-m) 2,6$	$P=0,5668223$	Helligk. $6,9 - 8,0$



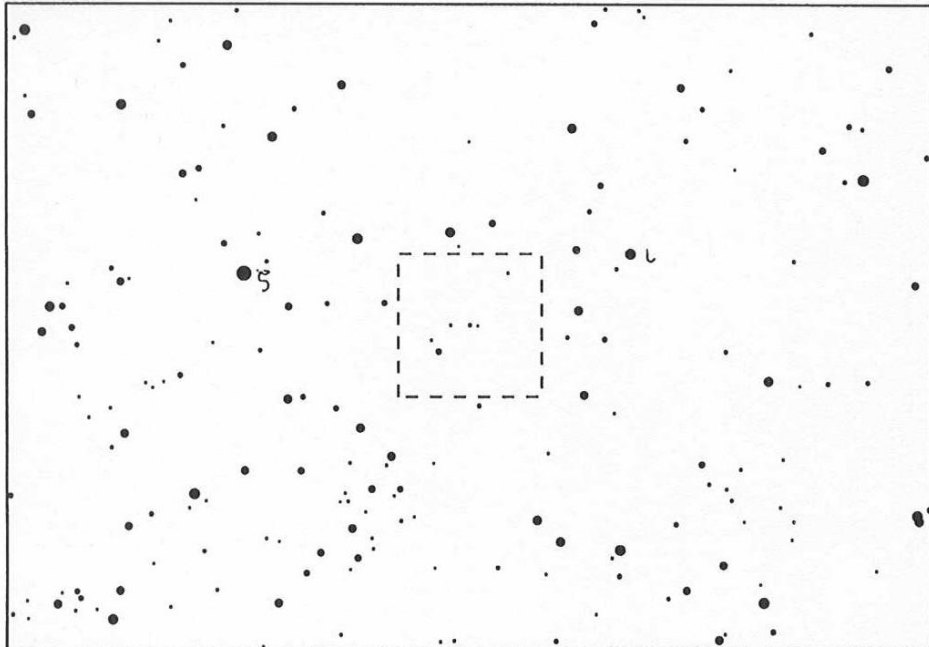
5 14 33 20 4 48 (1950.0)
5 17 31 20 7 59 (2000.0)

CD Tau

Max: 7.27 MinI: 7.90 MinII: 7.90 Typ: EA/D
D = 6.5h d = 0 h Phase: Per.: 3.435137d

19°x13°

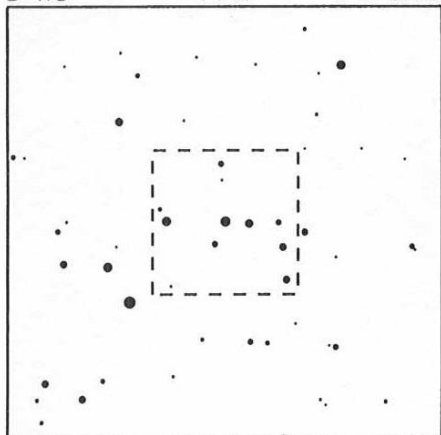
m <= 7.9



3°x3°

PPM

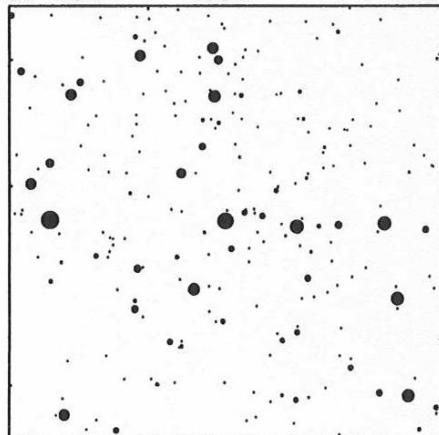
m <= 11.40



60'x60'

GSC

m <= 13.90



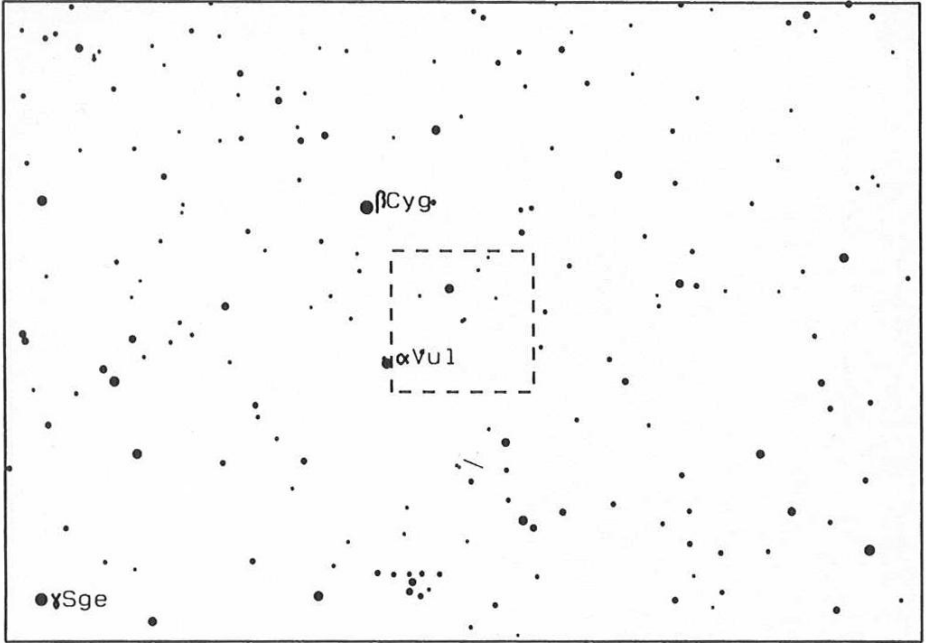
19 19 35 25 28 44 (1950.0)
19 21 39 25 34 29 (2000.0)

Z Vul

Max: 7.38 MinI: 9.20 MinII: 7.66 Typ: EA/SD
D = 10.6h d = 0 h Phase: Per.: 2.454934d

19°x13°

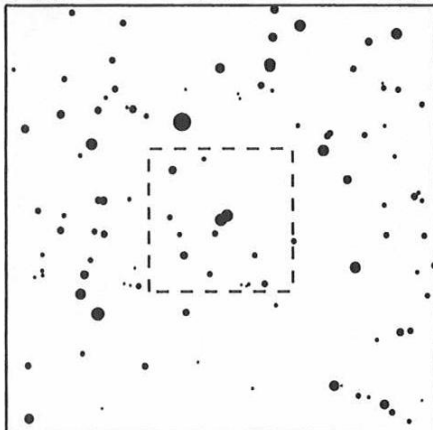
m <= 7.5



3°x3°

PPM

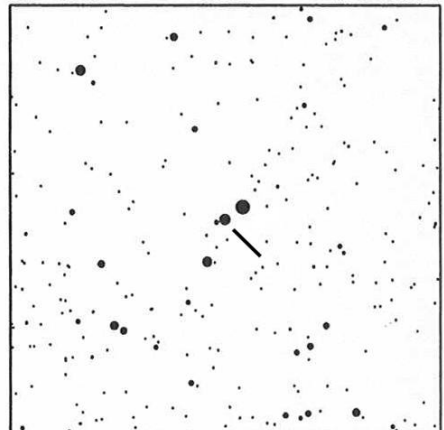
m <= 12.20



60'x60'

GSC

m <= 12.14



R And

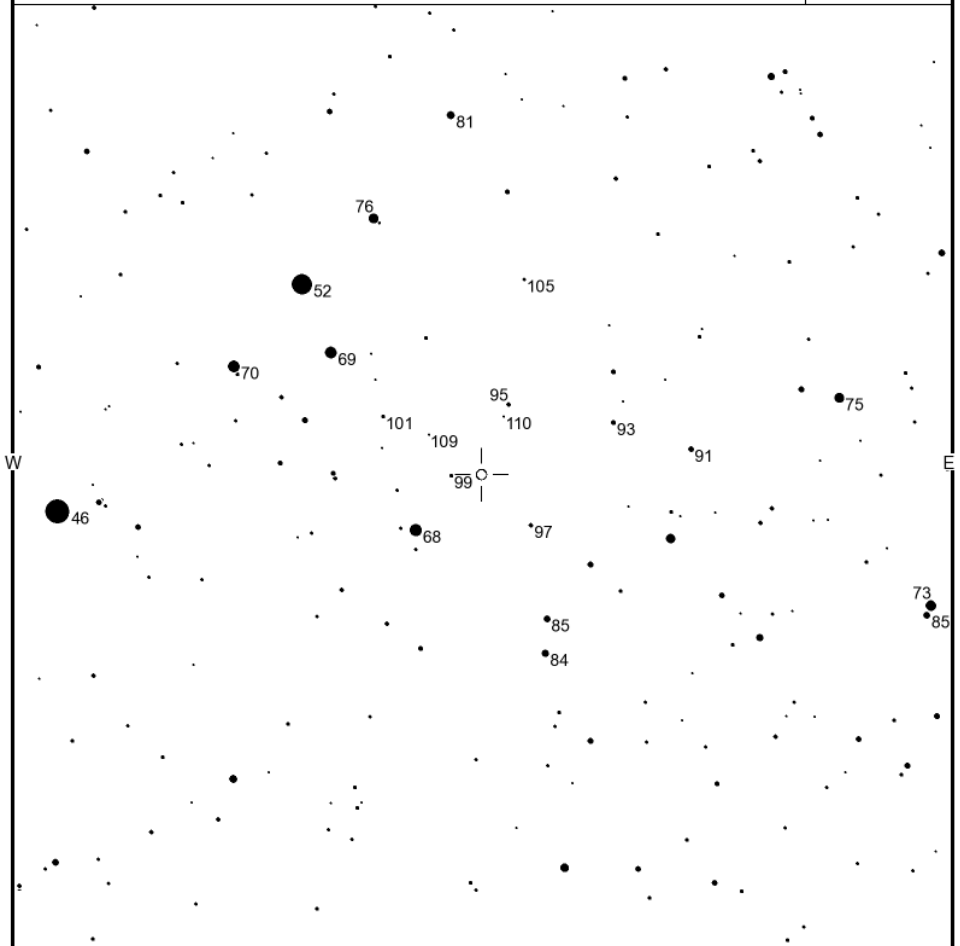
Magn: 5.8 - 14.9 V
Period: 409.33
Type: M
Spec: S3,5e-S8,8e(M7e)

R AND

(2000) 00:24:1.90 +38:34:37.0

AAVSO
Chart

Batch2-827



FOV = 3.0°

Please visit www.aavso.org to customize this chart.

<http://www.aavso.org/observing/charts/vsp/>

Copyright © 2008 AAVSO

R Cyg

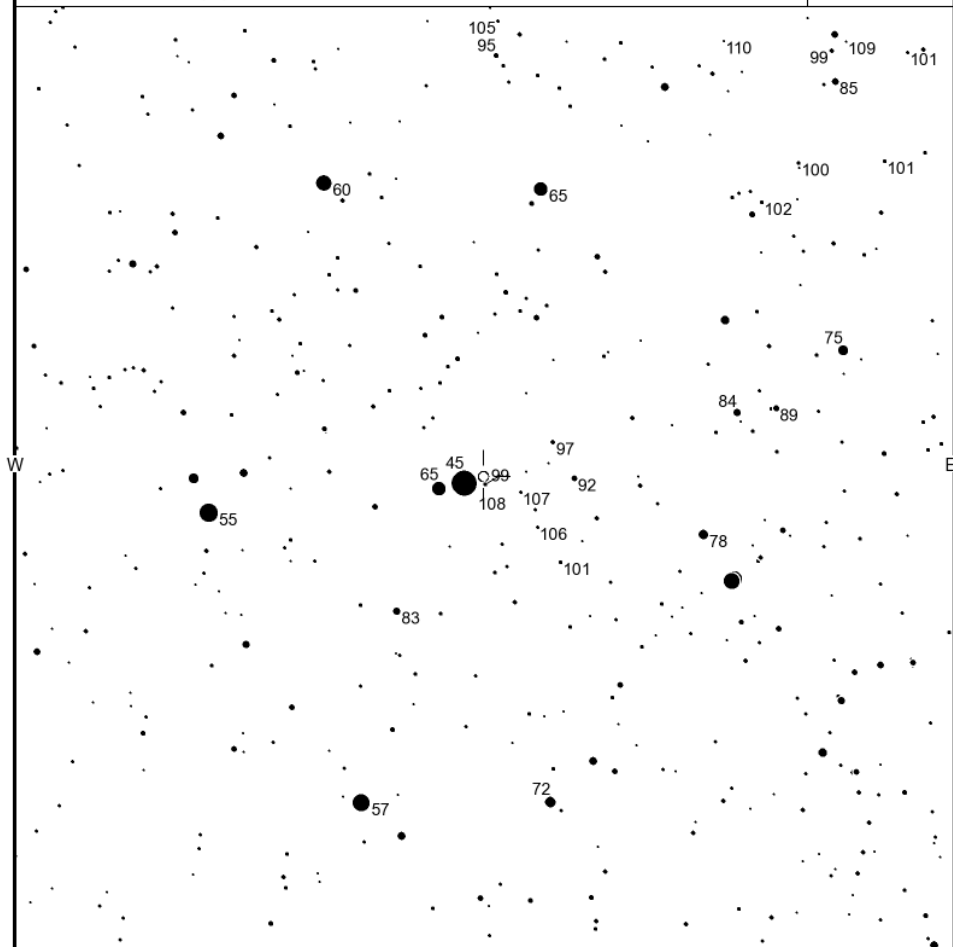
R CYG

AAVSO
Chart

Magn: 6.1 - 14.4 V
Period: 426.45
Type: M
Spec: S2.5,9e-S6,9e(Tc)

(2000) 19:36:49.40 +50:11:59.0

Batch 16-1369



FOV = 3.0°

Please visit www.aavso.org to customize this chart.

<http://www.aavso.org/observing/charts/vsp/>

Copyright © 2008 AAVSO

R Leo

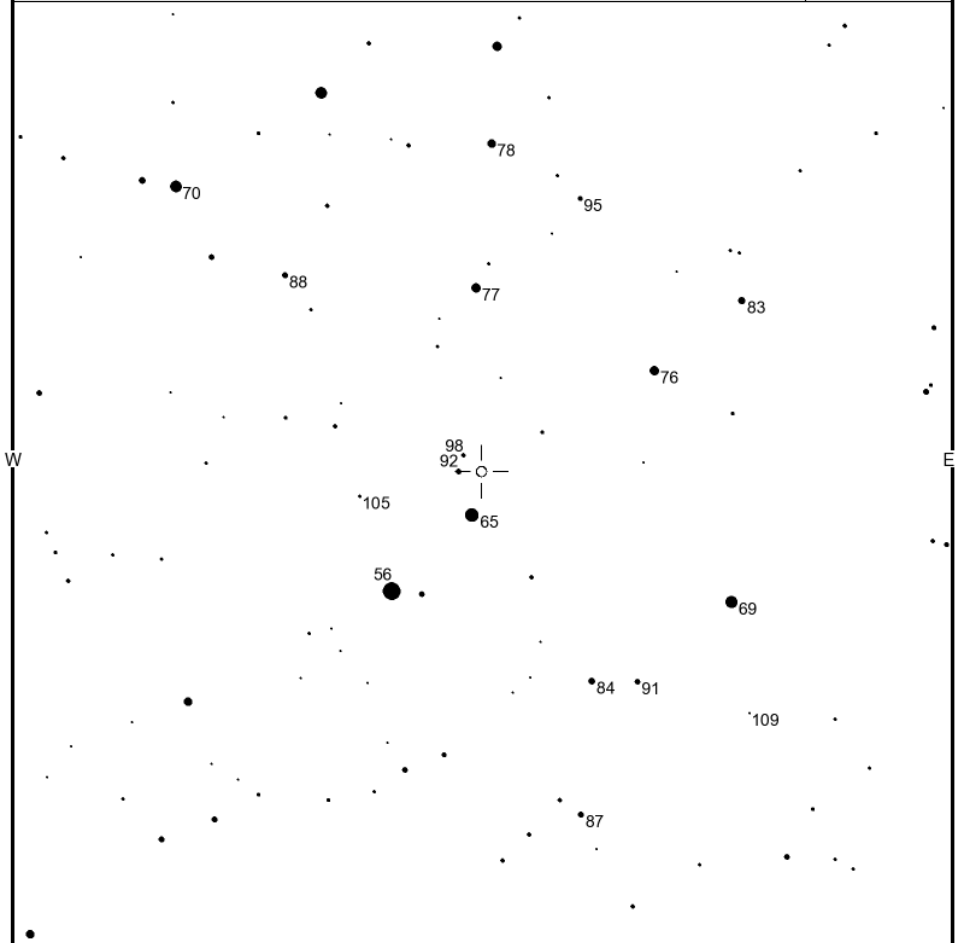
Magn: 4.4 - 11.3 V
Period: 309.95
Type: M
Spec: M6e-M8IIIe-M9.5e

R LEO

(2000) 09:47:33.50 +11:25:44.0

AAVSO
Chart

Batch11-1441



FOV = 3.0°

Please visit www.aavso.org to customize this chart.

<http://www.aavso.org/observing/charts/vsp/>

Copyright © 2008 AAVSO

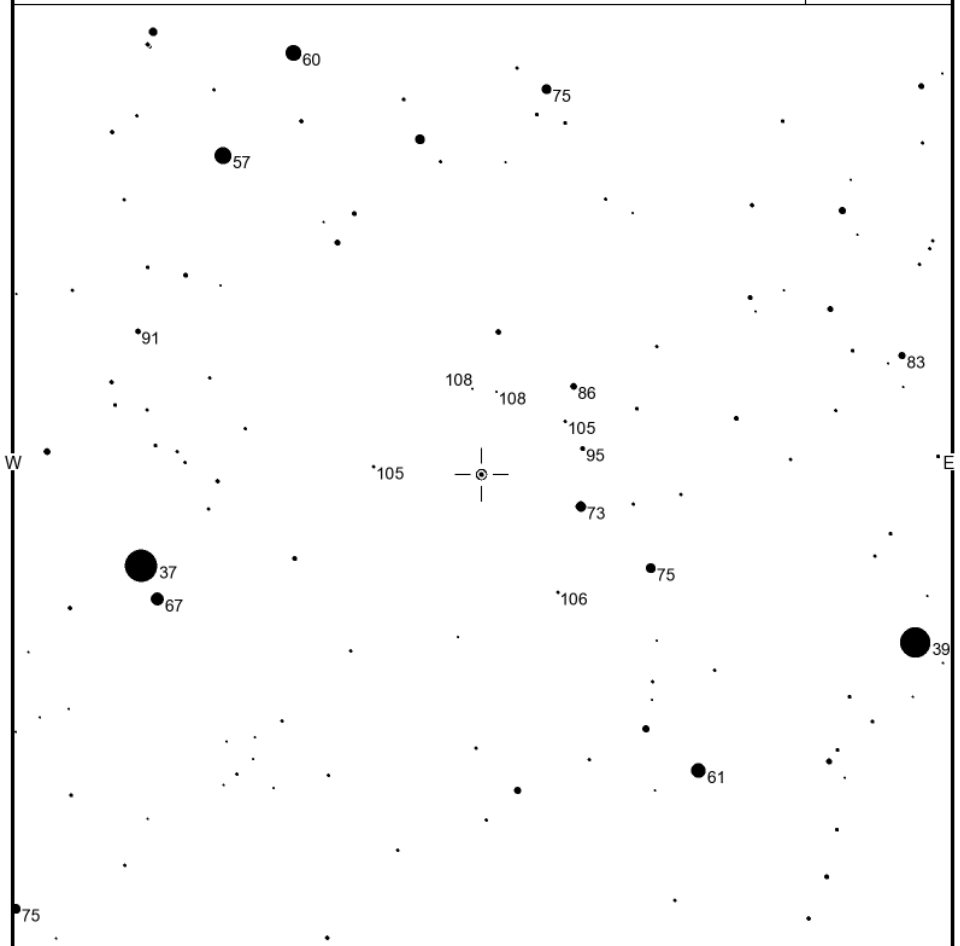
R Ser

Magn: 5.2 - 14.4 V
Period: 356.41
Type: M
Spec: M5IIIe-M9e

S
R SER
(2000) 15:50:41.70 +15:08:1.0

AAVSO
Chart

Batch11-1249



FOV = 3.0°

Please visit www.aavso.org to customize this chart.

<http://www.aavso.org/observing/charts/vsp/>

Copyright © 2008 AAVSO

AF Cyg

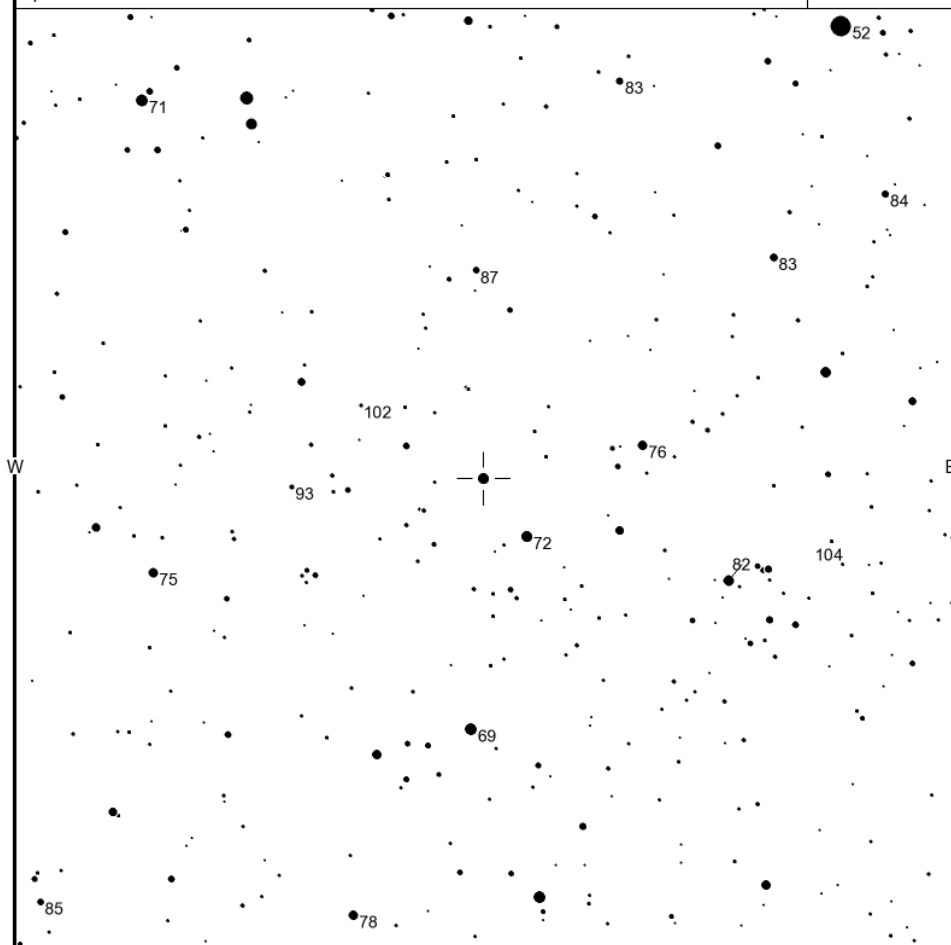
S

AAVSO
Chart

Magn: 7.4 - 9.4 p
Period: 92.5
Type: SRB
Spec: M5e-M7

AF CYG
(2000) 19:30:12.90 +46:08:52.0

Batch 16-3087



FOV = 3.0°

Please visit www.aavso.org to customize this chart.

<http://www.aavso.org/observing/charts/vsp/>

Copyright © 2008 AAVSO

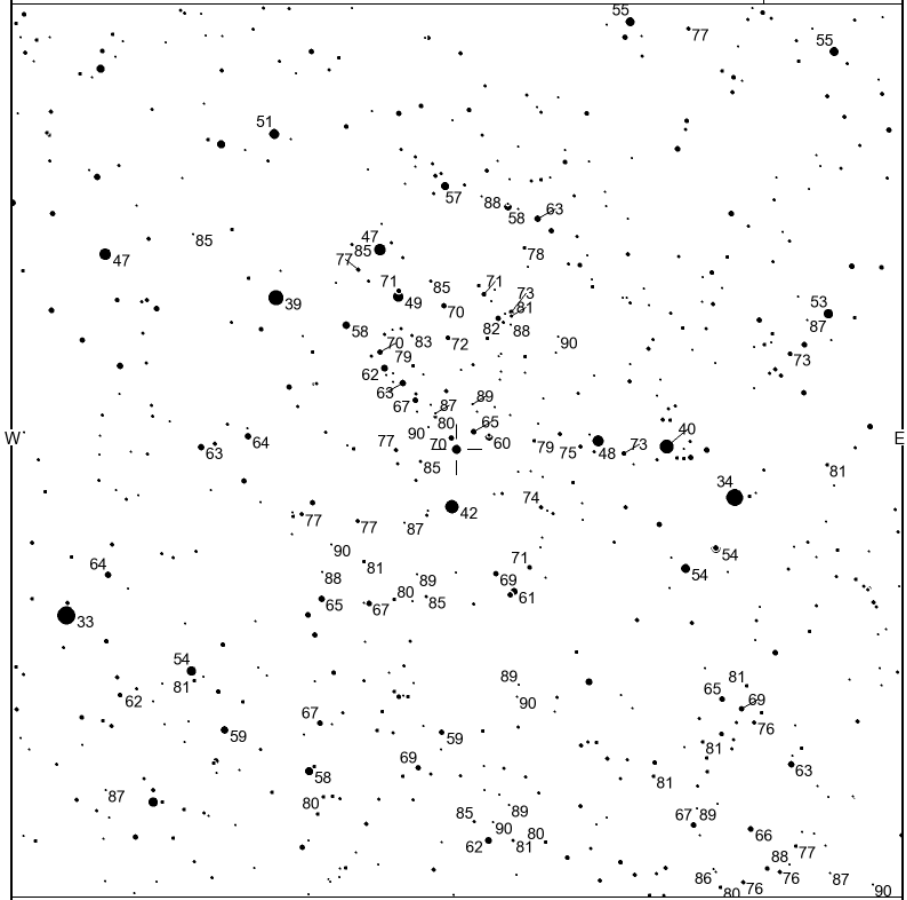
N

R Sct

Magn: 4.2 - 8.6 V
Period: 146.5
Type: RVA
Spec: G0Iae-K2p(M3)Ibe

R Sct
(2000) 18:47:29.00 -05:42:19.0

AAVSO
Chart
1029nfg



FOV = 15.0°

Please use the photometry table for CCD observations.

<http://www.aavso.org/observing/charts/vsp/>

Copyright © 2008 AAVSO

Rev.2.2 (08.2010)

Bundesdeutsche Arbeitsgemeinschaft für Veränderliche Sterne e.V.(BAV)

BAV Munsterdamm 90 12169 Berlin Germany zentrale@bav-astro.de
www.bav-astro.de